




# INTRODUCTION TO SMART HOMES

**LOXONE**

[loxone.com](https://loxone.com)

The background of the advertisement is a collage of two images. On the right, a woman with long red hair, wearing a white cardigan and grey pants, sits on a grey sofa with a green cushion, smiling at the camera. On the left, a young girl with blonde hair, wearing a white shirt and green overalls, sits at a kitchen counter, looking towards the right. The kitchen has a modern design with a sink and a faucet visible in the background.

# THE NEW STANDARD OF BUILDING AUTOMATION

Who doesn't know the indescribable feeling of when things just work out the way we want them to. This is why the perfect home works on autopilot: since it knows our routines and habits, your home can anticipate and take over tedious, daily tasks for you. For instance, when you enter the living room during evening hours, your home puts on dim lighting only so you can wind down before bed. At the same time, the blinds shut down by themselves to protect us from prying eyes. The room maintains a comfortable temperature until we switch to the bedroom and turn on the eco mode for the night. Also, the car starts charging once electricity is free or at a low rate. Ultimately, this means living without compromises. Every single day.

# THE EVOLUTION OF BUILDING AUTOMATION



[More Information](#)

What is home & building automation? How did it start, and how did it evolve? We could write books on this topic, however, the evolution of building automation can be described by three distinct levels.

## 1.0 Automation



### New Technologies

Alarm systems, motorized blinds, and more make their way into buildings. However, this doesn't change much, everything is still controlled manually.

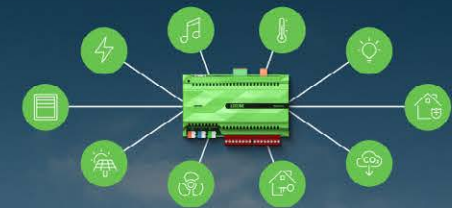
## 2.0 Automation



### Apps and Voice Assistants

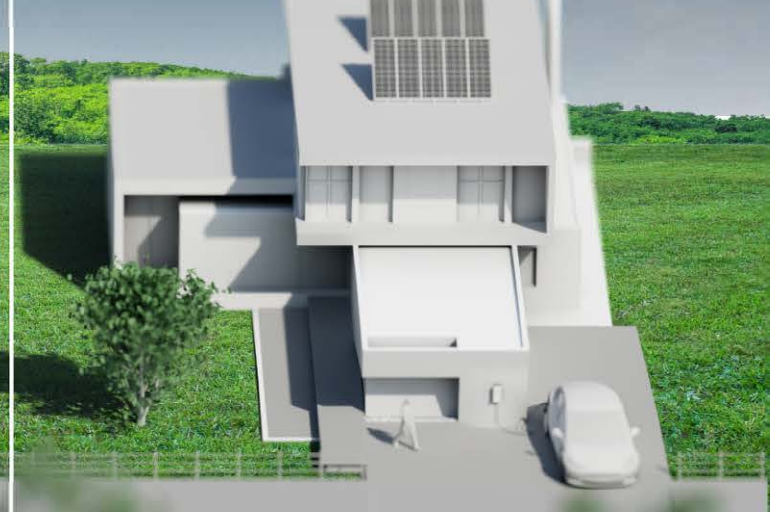
This is the norm in many places today. Numerous isolated solutions with apps and voice assistants make controlling your building complicated.

## 3.0 Automation



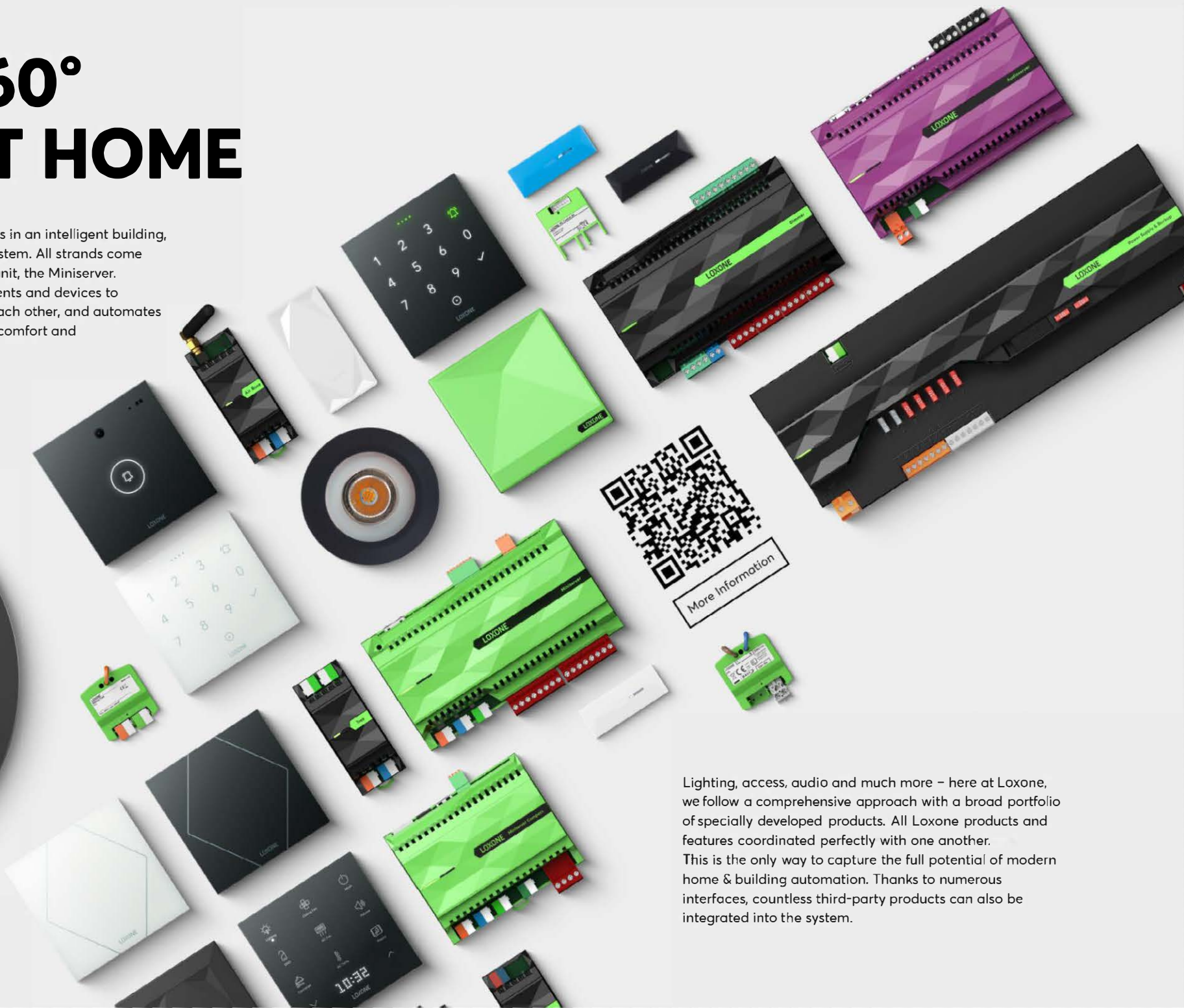
### True Automation

The building acts as a unit and knows exactly what it needs to do all by itself. This way, it takes over thousands of menial tasks each year.



# THE 360° SMART HOME

Loxone connects all components in an intelligent building, similar to the human nervous system. All strands come together at the central control unit, the Miniserver. It allows the individual components and devices to communicate seamlessly with each other, and automates most tasks to enhance security, comfort and energy efficiency.



Lighting, access, audio and much more – here at Loxone, we follow a comprehensive approach with a broad portfolio of specially developed products. All Loxone products and features coordinated perfectly with one another. This is the only way to capture the full potential of modern home & building automation. Thanks to numerous interfaces, countless third-party products can also be integrated into the system.

# We want technologies for savings, comfort and safety.

## Do we need smart homes?

Like it or not, some level of "smart" technology has become standard in both new and renovated buildings. From thermostats and alarms to air conditioners, garage doors, solar systems, and dimmable lighting, modern systems need a way to function together. Whether your project is simple or high-end, there's a decision to be made: will the technology work seamlessly for you, or will it add unnecessary complexity

# TWO PROBLEMS ONE ANSWER

# We need technologies due to regulations, subsidies, etc.

## Did you know?

According to the EPA, the sector for electric power was the second largest source of greenhouse gas emissions in the United States in 2023. The operation of buildings is responsible for 40% of energy usage. This puts enormous pressure on home and business owners to reduce their carbon footprint. If we don't want to compromise on comfort of living, intelligent building will play a key role to bridge the gap.

# WHY IS REAL AUTOMATION SO IMPORTANT?



## ONLY REAL AUTOMATION...

### ... PROVIDES UNPARALLELED COMFORT AND CONVENIENCE

By adapting seamlessly to daily needs, home automation simplifies (or eliminates) menial tasks for an intuitive and stress-free experience that lets you relax and enjoy every moment.

### ... GIVES HOME OWNERS TRUE PEACE OF MIND.

Thanks to its robust reliability, ease of use, and integrated security and safety features, home automation from Loxone ensures you feel secure, comfortable, and always in control.

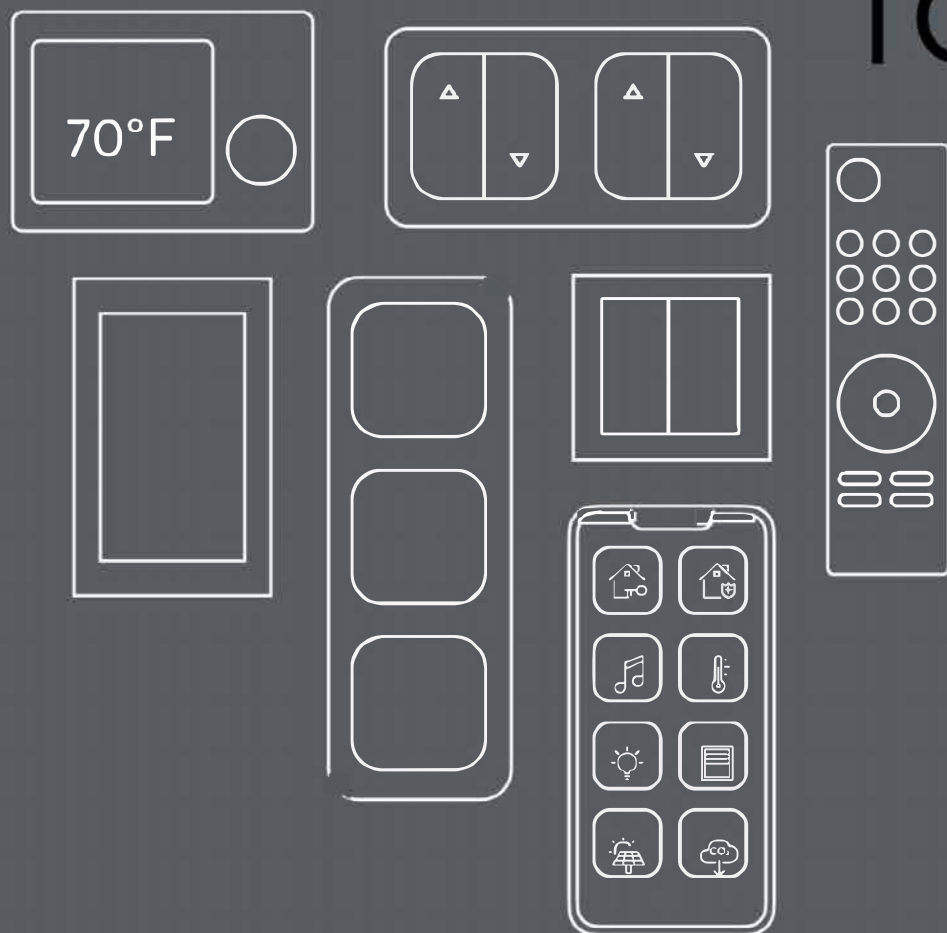
### ... ENABLES INTELLIGENT ENERGY MANAGEMENT

Reduce your monthly energy bill and your carbon footprint at the same time with the kind of true energy efficiency that is only achieved when all components work together.

Relying on numerous systems, elements, controls, switches and apps to manage different aspects of your smart home is inefficient, unwieldy and, let's face it, just plain UGLY.

# HOW ARE WE GOING TO

# END THIS MESS?



With the  
**Loxone Switch  
Standard**

For more information,  
see the next page. ►

# THE LOXONE SWITCH STANDARD

Nobody likes complicated controls and a multitude of switches cluttering their walls. That's why we created the Switch Standard: with a universal control concept throughout the house, the learning curve is greatly reduced. Anyone can use it to operate the functions of a smart home.



## Single-tap

Just a tap on the large central area will switch your lighting mood. A tap on the top or bottom left corner will raise or lower blinds, respectively, while the upper and lower right corners adjust music volume.



## Double-tap

When you're leaving a room, a double-tap in the center is all you need to shut off the lights and connected devices in the room. A double-tap on the top right corner will change the music source. And to switch off the music simply double-tap the bottom right corner.



## Triple-tap

A triple-tap activates the "House-off" function. This means the entire building will go into 'sleep mode' - switching all lights off, disconnecting standby devices and arming the alarm system.

# THE TRADITIONAL WAY



Different manufacturers that don't work together



Uncertainty about the final price



Multiple, disconnected controls



Very limited possibility for automation



Difficult to add new devices, different apps



No long term support, dependency on cloud, lack of data privacy



Automation of up to 90% of home operations, 100% data privacy (cloud-free)



Clear overview of all costs before the start



New features and options thanks to free updates



Single supplier providing robust support



1 switch + 1 app for everything



Additional devices can be added easily.

# THE MODERN WAY with LOXONE



15% Hardware

85% Software

## THE DIFFERENCE? THE SOFTWARE!

We are mostly known for being a hardware manufacturer. However, our hardware is only the tip of the iceberg! We are a software company, first and foremost: 85% of our development efforts go into our software tools. These tools are what differentiates us from the rest of the market.

Find some impressive examples  
on the next pages ►

# JUST ANOTHER AUDIO SYSTEM?

Not at all! To us, audio means so much more than "just" music! Individual text-to-speech messages remind you of open windows, your speakers become an active part of your alarm system, and much more. The system can be scaled as desired. For example, it creates an atmospheric ambience in restaurants or a productive working environment in offices.

## HIGHLIGHTS

**Smart features such as an intelligent doorbell,  
text-to-speech options, voice announcements,...**

Impressively scalable

**Multiple rooms – perfectly synchronized**

and much more.



More information



# JUST ANOTHER ACCESS SYSTEM?

Not by a long shot! Encrypted key fobs and secure codes make our system highly flexible. Assign one-time codes for your house cleaner, grant guests access to certain areas, and much more. We have developed a unique feature especially for larger residences and estates: Loxone Trust. Staff are granted the same access rights across multiple structures without having to provide authorizations for each individual case.

## HIGHLIGHTS

### **Access control across locations**

Access via codes or NFC

### **Remote access**

and much more.



More Information



# JUST ANOTHER

**LIGHTING SYSTEM**

ENERGY MANAGEMENT SYSTEM

**SHADING SYSTEM**

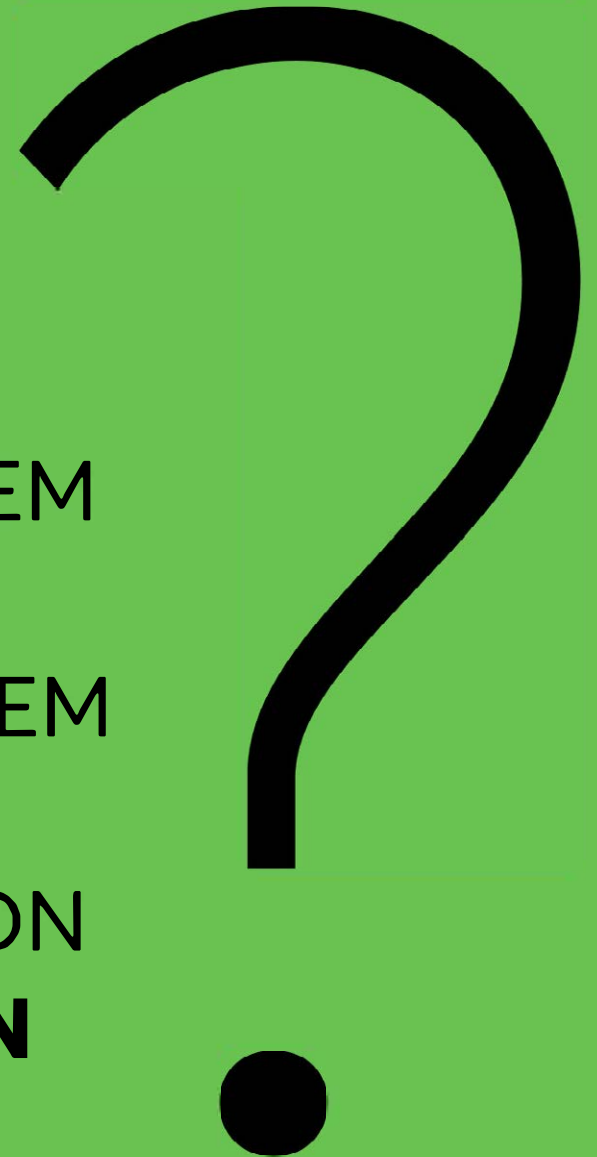
HEATING & COOLING SYSTEM

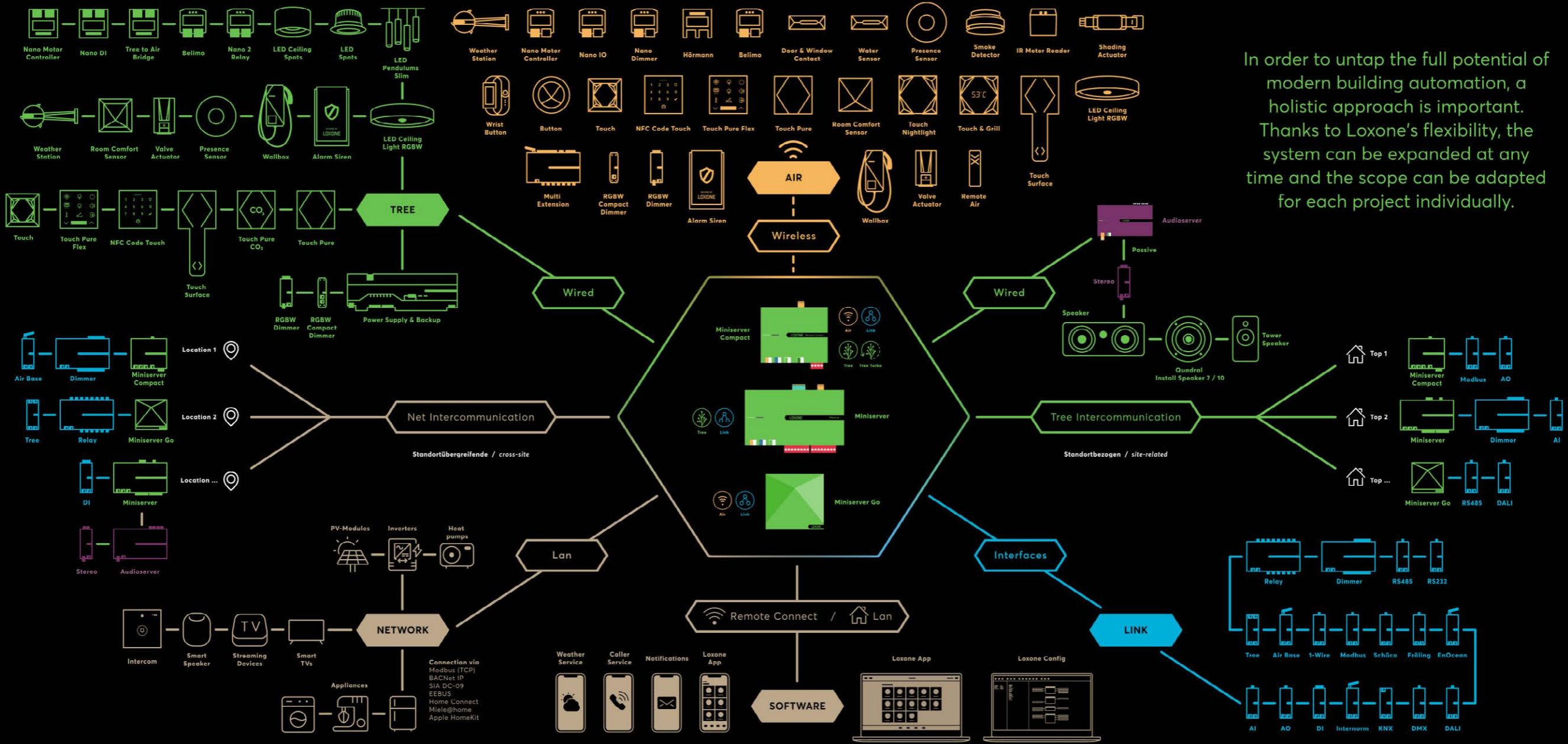
**SECURITY SYSTEM**

HOSPITALITY SOLUTION

**AAL SOLUTION**

ETC.





In order to untap the full potential of modern building automation, a holistic approach is important. Thanks to Loxone's flexibility, the system can be expanded at any time and the scope can be adapted for each project individually.



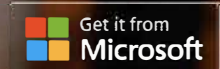
The Loxone App offers further options for convenient operation, and an overview of the entire building at your fingertips – even on the go. The settings for all features are clearly displayed in the app. If you want to change or add a specific setting, you will be able to do so intuitively – you won't need a manual.

The app can be adapted based on your specific needs. For instance, you can define which family members have access to which feature, or receive notifications in certain events: in the event of an alarm, predefined situations, or when someone is at the door.

# EVERYTHING UNDER CONTROL. ANYTIME AND ANYWHERE.



Download  
the Loxone  
App for free





**HOW  
MUCH  
DOES IT  
COST?**

For more information,  
see the next page ►



**COST**

With Loxone, the costs for additional features increases hardly, while with other manufacturers, the costs for separate solutions **increases extremely.**



**OTHER MANUFACTURERS**

**LOXONE**

Same cost of a so-called "modern" building without automation **compared to a truly future-proof, Loxone-automated building.**

Features needed in a modern building

Numerous additional features such as highly-efficient energy management

**True automation and future-proof scalability - only with Loxone!**



**FEATURES**

# Fewer devices, more features, less costs.

When you compare a Loxone project with one that implemented individual solutions, you will find that, as the number of features increases, the costs decrease in a Loxone building.

This means that a typical modern building with numerous technologies implemented costs more or less the same as a building with Loxone automation.

This is partly thanks to the free software. It enables you to utilize the technologies in your building for so much more than meets the eye. For instance, if you install presence sensors, you can use them to intelligently control lighting as well as audio. Then, again, software can turn your presence sensors and audio system as a full-fledged alarm system - the list goes on.



More Information

# IS LOXONE ONLY FOR SMART HOMES?

By no means! Whether we are talking about offices, commercial premises, residential buildings, hotels, restaurants, warehouses or special applications – by using Loxone technology, the value of any type or size of building can be increased. What's more, the return on investment can be significantly shortened through real energy management. In addition, the building automatically adapts to the needs of all occupants in a building, ensuring a pleasant and comfortable everyday life.

# FEATURE CATALOGUE



# Lighting

## **Presence-activated lighting**

Lights will come on when a Presence Sensor detects motion.

## **Lights can mimic occupancy when you're out**

As a deterrent, lights in your home can turn on and off periodically, making it seem like someone is at home.

## **Lights turn off automatically when not needed**

Depending on the room, lights will turn off if no motion has been detected for a set period of time.

## **Conveniently switch off all lights from one switch when leaving your home**

You'll never have to worry about lights being left on again. You can switch off all the lights in your house using the switch by your front door as you leave.

## **Factors in natural light levels**

If a room is already filled with enough natural light the lights in that room will not turn on with motion to save energy.

## **Central monitoring and control of lighting in the app**

You can conveniently check the app to see if lights are on or off and even control them whether you're at home or not.

## **Lights stay on if noise is detected in that room**

If you are watching the TV in the living room, for example, the noise from this will keep the lights on even if no motion has been detected.

## **Dimmable lighting**

With this feature, the brightness levels of light can either be adjusted in the app, or set levels can be selected via a switch.

## **Night Mode lighting**

When you're ready for bed, any motion in rooms with dimmable light will activate to gently light your path, without waking anyone who is still asleep.

## **Undercounter/cabinet LED lighting**

Additional task lighting can be installed in select rooms, which can be controlled separately from the main lighting.

## **Option for lights to flash when doorbell is pressed**

You can choose to have the lights in specific rooms flash subtly when the doorbell is pressed.

## **Colored lighting**

This option of lighting can be set to almost any color you can think of. You can select predefined colors from the switch in that room or enjoy even more control from the app.

**AND MUCH MORE!**

# HVAC

## **Temperature and humidity monitoring**

The temperature and humidity level in each room is measured with the built-in sensors in each switch.

## **Temperature is maintained when you're still in the room**

If you are still in a room and the system is scheduled to turn off, the temperature will be maintained for as long as motion is detected.

## **Individual room control**

You can set a suitable comfort temperature for each room in your building.

## **Frost Protection and Overheat Protection**

Your HVAC system ensures the temperature in any room never drops below or rises above a set point.

## **Intelligent learning**

Your system will learn how long it takes to reach the temperature that you have set for each room to ensure rooms are always at the right temperature at the right time.

## **Statistics in the app**

You can monitor the usage and performance of the heating and cooling system throughout your building.

## **Weekly schedule with holidays and custom calendar entries**

More than just a Monday through Sunday schedule: you can customize exactly when the heating and cooling system should be on or off, taking into account school & public holidays and when you are returning from vacation.

## **Optional maintenance reminders**

Depending on your heat source you can be reminded of required annual maintenance, the changing of filters, etc.

## **Notifications of changes to the system**

You can be notified should the system detect any unusual behavior.

## **Central monitoring and control of heating and cooling in the app**

At a glance, you can see the current temperature in each room and whether the system is on in those rooms. You can also edit the heating and cooling schedule and define the various temperature set points.

**AND MUCH MORE!**

# Security

## **Presence-based burglar alarm**

The burglar alarm is triggered if motion is detected inside your home when it shouldn't be.

## **Easy day and night arming options**

Your burglar alarm can monitor different motion sensors, for example, upstairs or downstairs, based on whether you're arming the burglar alarm during the day, while everyone is out or at night while everyone is asleep.

## **App notifications when something is amiss**

If the burglar alarm is triggered, you will get a notification, via app, call, message, text-to-speech, etc. to let you know which sensor has been triggered.

## **Lights can flash throughout your home when the burglar alarm is triggered**

You can choose to have the lights in your home linked to the burglar alarm so that they flash as a deterrent during a potential break-in.

## **Delayed arming feature**

You can specify a set number of seconds before the alarm is armed, giving you enough time to leave your home after setting the alarm.

## **Multi-staged alarm**

If your alarm is triggered, you will first receive a notification of your choosing via app, call, message, text-to-speech, etc. Depending on the additional features in your building, the next stages can include visual and audible elements.

## **History logs**

In the app, you can view a recent history of the exact sensors that had led to the burglar alarm being triggered and at what time this happened.

## **Optional panic buttons**

You can choose to include a feature whereby a long press on chosen switches can send a panic notification to other members of the household.

## **Central monitoring and control of burglar alarm in the app**

For peace of mind, whether you are at home or away, you can view the status of your burglar alarm, as well as set or unset it from the app.

## **All speakers will sound if burglar alarm is triggered**

You can choose to have any or all of the multiroom speakers in your home play an alarm siren sound, or a specific audio file of your choosing, if the burglar alarm is triggered.

**AND MUCH MORE!**

# Multiroom Audio

## **Play music in different rooms**

Play your favorite song in different rooms at the same time, or control the music individually.

## **Music can start automatically when entering a room**

You can choose to have music automatically play as you enter a room. You can customize which music starts to play, at what volume and at what time of the day this should happen for each room.

## **Control music from the switch**

You can conveniently play, pause, control the volume and even change what's playing from the switch in that room.

## **Central control of music in the app**

The app gives you complete control over what you want to play in each room. You can see at a glance which room is playing music, change what is being played and adjust the volume.

## **Option to play predefined messages based on events in your home**

Predefined messages and reminders that you have set can play through speakers in chosen rooms based on conditions such as time and date.

## **Record your own announcements to play in different rooms**

In the app, you can record a quick voice note and choose to play it over the speakers in specific rooms.

## **Stream audio from Spotify & Tunes**

With support for Spotify & Tunes, you can choose any music, radio station, podcasts, etc. from these services to play in your chosen rooms.

## **Support for Apple AirPlay**

With AirPlay technology, you can play music from your iPhone, iPad or Mac through the speakers in a chosen room.

## **Option to have your favorite playlist wake you up the morning**

You can have music or a radio station gradually start to play at a specific time in the morning to wake you up.

## **Set individual music favorites in each room**

Depending on the room, you can choose to have a selection of your favorite music playlists, radio stations or podcasts conveniently available to select from the switch in that room.

## **Conveniently switch off audio from one switch when leaving your home**

When leaving your home, you can turn off all music playing in any of the rooms from the switch by the front door.

## **Speakers play a notification when you have a visitor**

When someone rings the doorbell, a chime will play in the rooms with speakers. If music is already playing in a room, it will be paused for the chime to play and then the music will resume.

**AND MUCH MORE!**

# Access

## **Access via Code & NFC**

With Loxone, access is easier and more secure than ever. Just hold your NFC Key Fob up to the NFC Code Touch or use your code and the door will open. – it really is that simple! You can also set individual functions to be triggered by a specific code. You could open the garage door by pressing 5 then entering your code.

## **Individual access rights for everybody**

You can use the app to assign specific access rights. If a friend needs to pick something up while you're out, simply give them a one-time code which will only work on that occasion. If the cleaner comes at 3 pm every Friday, assign them a time-based code.

## **Keypad with fob reader to disarm burglar alarm**

Each member of the household can conveniently disarm the burglar alarm using either a unique pincode or a secure fob.

## **HD video intercom to see and speak with anyone at your front door**

With the app, you will be able to see who is at your front door from your smartphone or tablet. You will also be able to answer the intercom to speak with your visitor.

## **Connect to your intercom even when you're not at home via the app**

Even when you're not at home, you can see or speak with visitors at your front door via the app.

## **Answering message**

If you're not available to personally answer the intercom, you can use the app to choose to play a predefined message through the intercom based on who is at your front door.

## **Access and recent visitor history in the app**

You can choose to have your intercom take a photo when someone rings your doorbell. Via the app, you can view a recent history of your visitors as well as a log of when the keypad was used.

## **App notifications when someone rings the doorbell**

Whether you're home or away, you will be notified that someone is at your front door via the app.

**AND MUCH MORE!**

# Central Features

## **Night Mode**

Features can perform different tasks at night. For example, the lighting changes to a cozy level, the audio plays at a lower volume, the doorbell is muted, and only certain sensors are monitored by the burglar alarm. This can be activated via a bedside switch or the app.

## **All Out Mode**

Features can also perform different tasks when everyone is out for the day. This includes turning off all lighting and music, following a set heating and cooling schedule and arming the alarm fully. This can be activated via a switch in your hallway, or via the app.

## **Room Off**

The last person leaving a room can conveniently turn off all lighting and music with a simple double-tap on the switch in that room.

## **Away Mode**

Features can perform differently when you are away for an extended period of time such as on vacation. This includes following a holiday heating and cooling schedule with Frost Protection, mimicking presence and setting the burglar alarm. This can be activated via the app.

## **Potential for Customizable Modes**

When speaking with your installer, you can choose to have additional operating modes set up based on the features you have chosen for your home. This can include an entertaining mode or vacation mode. Here, the lighting, HVAC and security perform differently.

**AND MUCH MORE!**

# Other Features

## **Free app control for the whole family**

There is no limit to how many family members can download the free app. Speak to your Loxone Partner about creating unique logins for each member of the household.

## **Option to create your own automatic rules**

In the app, you can create your own automation rules from your chosen features.

## **Option to create your own sequences**

If you find that you are often using the same features together in the app, you can create your own sequence to trigger these actions together.

## **System Status messages**

Similar to the lights on the dashboard in your car, the app will show you important information about your system.

## **Simple, unified switches**

Interacting with the features in your home should not be complicated. A familiar switch in each room offers an intuitive and consistent ease of use for the whole family and any visitors.

## **Connect with your home on the go securely via the app**

You can connect with your home even on the go via the app. To protect your data and privacy, the communication between your home and the app is fully encrypted, so your data stays with you only.

## **Smart bedside alarm clock with control for lighting**

This standalone device can be placed next to your bed, giving you another familiar point of control for the features in your home. It includes a built-in alarm clock and color-changing light.

**AND MUCH MORE!**